

PRODUCT INFORMATION PACKET

Model No: 215THTL7726
Catalog No: Y547
10,1800,TENV,215TC,3/60/230/460
1000:1 Speed Ratio



Regal and Marathon are trademarks of Regal Beloit Corporation or one of its affiliated companies.
©2018 Regal Beloit Corporation, All Rights Reserved. MC017097E



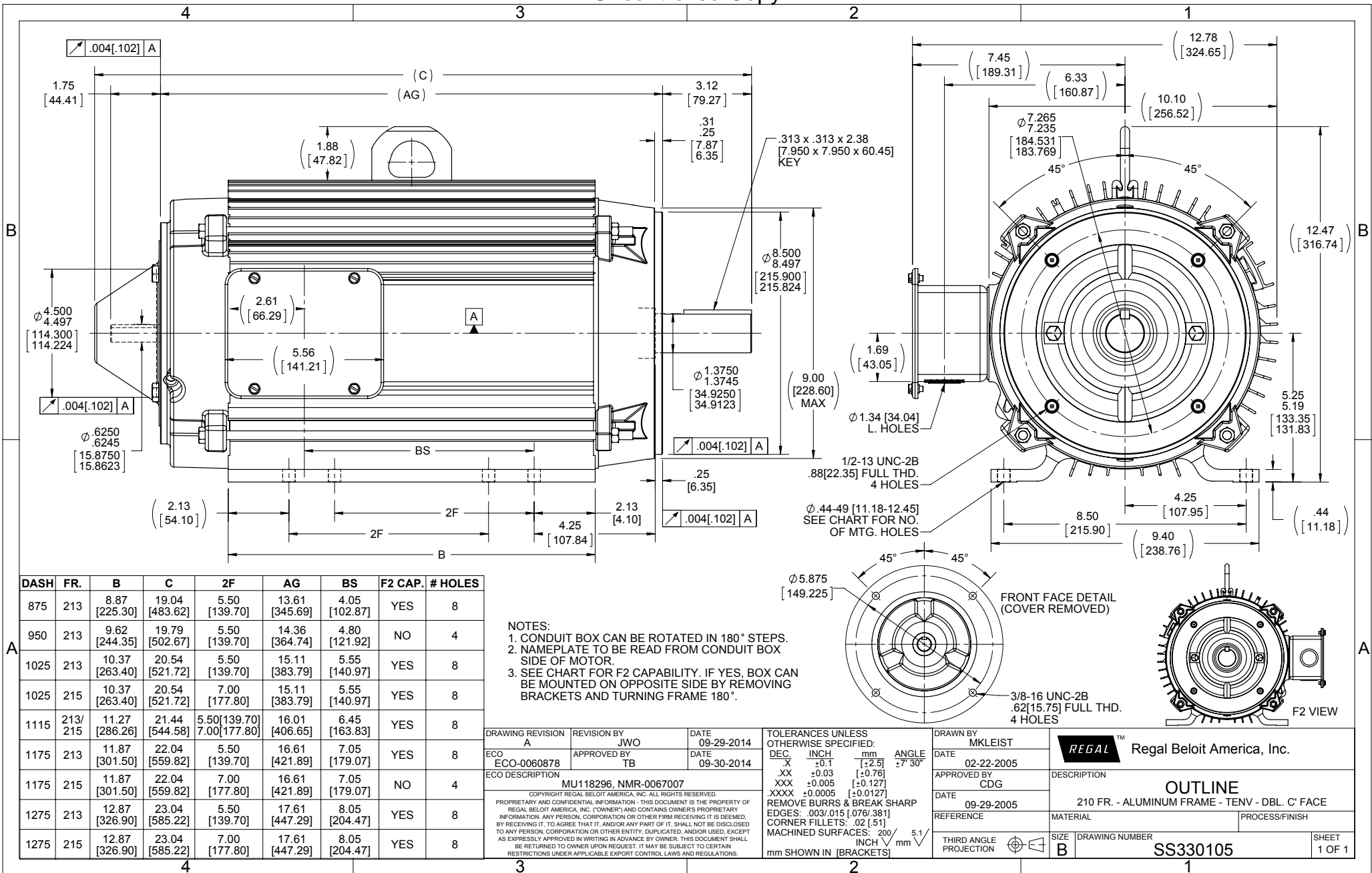
Nameplate Specifications

Output HP	10 Hp	Output KW	7.5 kW
Frequency	60 Hz	Voltage	230/460 V
Current	27.0/13.5 A	Speed	1774 rpm
Service Factor	1	Phase	3
Efficiency	90.2 %	Duty	Continuous
Insulation Class	F	Design Code	INV
KVA Code	M	Frame	215TC
Enclosure	Totally Enclosed Non Ventilated	Overload Protector	No
Ambient Temperature	40 °C	Drive End Bearing Size	6309
Opp Drive End Bearing Size	6206	UL	Recognized
CSA	Y	CE	Y
IP Code	43		

Technical Specifications

Electrical Type	Squirrel Cage Inverter Duty	Starting Method	Inverter Only
Poles	4	Rotation	Reversible
Mounting	Rigid base	Motor Orientation	Horizontal
Drive End Bearing	Ball	Opp Drive End Bearing	Ball
Frame Material	Aluminum	Shaft Type	T
Overall Length	23.04 in	Frame Length	12.75 in
Shaft Diameter	1.375 in	Shaft Extension	3.12 in
Assembly/Box Mounting	F1/F2 Capable		
Outline Drawing	B-SS330105-1275	Connection Diagram	A-EE7308T

This is an uncontrolled document once printed or downloaded and is subject to change without notice. Date Created: 06/29/2018



DASH	FR.	B	C	2F	AG	BS	F2 CAP.	# HOLES
875	213	8.87 [225.30]	19.04 [483.62]	5.50 [139.70]	13.61 [345.69]	4.05 [102.87]	YES	8
950	213	9.62 [244.35]	19.79 [502.67]	5.50 [139.70]	14.36 [364.74]	4.80 [121.92]	NO	4
1025	213	10.37 [263.40]	20.54 [521.72]	5.50 [139.70]	15.11 [383.79]	5.55 [140.97]	YES	8
1025	215	10.37 [263.40]	20.54 [521.72]	7.00 [177.80]	15.11 [383.79]	5.55 [140.97]	YES	8
1115	213/ 215	11.27 [286.26]	21.44 [544.58]	5.50 [139.70] 7.00 [177.80]	16.01 [406.65]	6.45 [163.83]	YES	8
1175	213	11.87 [301.50]	22.04 [559.82]	5.50 [139.70]	16.61 [421.89]	7.05 [179.07]	YES	8
1175	215	11.87 [301.50]	22.04 [559.82]	7.00 [177.80]	16.61 [421.89]	7.05 [179.07]	NO	4
1275	213	12.87 [326.90]	23.04 [585.22]	5.50 [139.70]	17.61 [447.29]	8.05 [204.47]	YES	8
1275	215	12.87 [326.90]	23.04 [585.22]	7.00 [177.80]	17.61 [447.29]	8.05 [204.47]	YES	8

NOTES:
 1. CONDUIT BOX CAN BE ROTATED IN 180° STEPS.
 2. NAMEPLATE TO BE READ FROM CONDUIT BOX SIDE OF MOTOR.
 3. SEE CHART FOR F2 CAPABILITY. IF YES, BOX CAN BE MOUNTED ON OPPOSITE SIDE BY REMOVING BRACKETS AND TURNING FRAME 180°.

DRAWING REVISION A	REVISION BY JWO	DATE 09-29-2014
ECO ECO-0060878	APPROVED BY TB	DATE 09-30-2014
ECO DESCRIPTION MU118296, NMR-0067007		

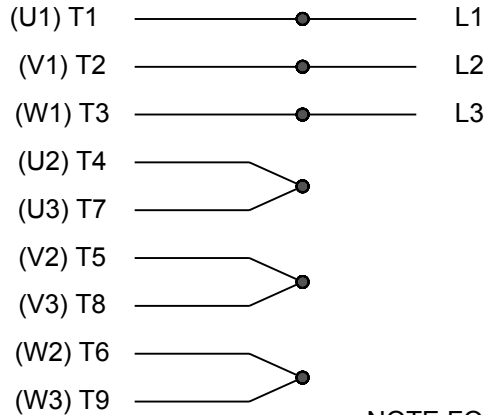
COPYRIGHT REGAL BELOIT AMERICA, INC. ALL RIGHTS RESERVED.
 PROPRIETARY AND CONFIDENTIAL INFORMATION - THIS DOCUMENT IS THE PROPERTY OF REGAL BELOIT AMERICA, INC. (OWNER) AND CONTAINS OWNER'S PROPRIETARY INFORMATION. ANY PERSON, CORPORATION OR OTHER FIRM RECEIVING IT IS DEEMED, BY RECEIVING IT, TO AGREE THAT IT, AND/OR ANY PART OF IT, SHALL NOT BE DISCLOSED TO ANY PERSON, CORPORATION OR OTHER ENTITY, DUPLICATED, AND/OR USED, EXCEPT AS EXPRESSLY APPROVED IN WRITING IN ADVANCE BY OWNER. THIS DOCUMENT SHALL BE RETURNED TO OWNER UPON REQUEST. IT MAY BE SUBJECT TO CERTAIN RESTRICTIONS UNDER APPLICABLE EXPORT CONTROL LAWS AND REGULATIONS.

TOLERANCES UNLESS OTHERWISE SPECIFIED:			
DEC.	INCH	mm	ANGLE
.X	±0.1	[±2.5]	±7° 30'
.XX	±0.03	[±0.76]	
.XXX	±0.005	[±0.127]	
.XXXX	±0.0005	[±0.0127]	
REMOVE BURRS & BREAK SHARP EDGES: .003/.015 [076/381] CORNER FILLETS: .02 [51] MACHINED SURFACES: 200 INCH/5.1 mm SHOWN IN [BRACKETS]			

DRAWN BY MKLEIST	DATE 02-22-2005
APPROVED BY CDG	DATE 09-29-2005
REFERENCE	THIRD ANGLE PROJECTION

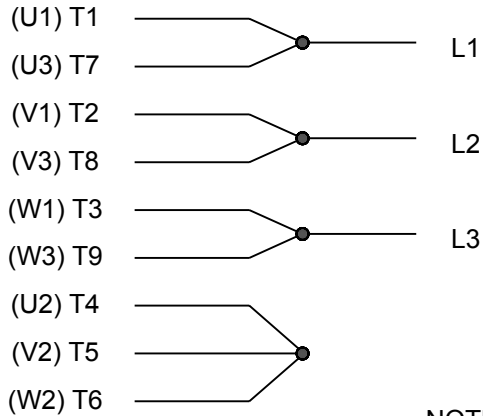
Regal Beloit America, Inc.	
DESCRIPTION 210 FR. - ALUMINUM FRAME - TENV - DBL. C' FACE	
MATERIAL	PROCESS/FINISH
SIZE B	DRAWING NUMBER SS330105
SHEET 1 OF 1	

HIGH VOLTAGE

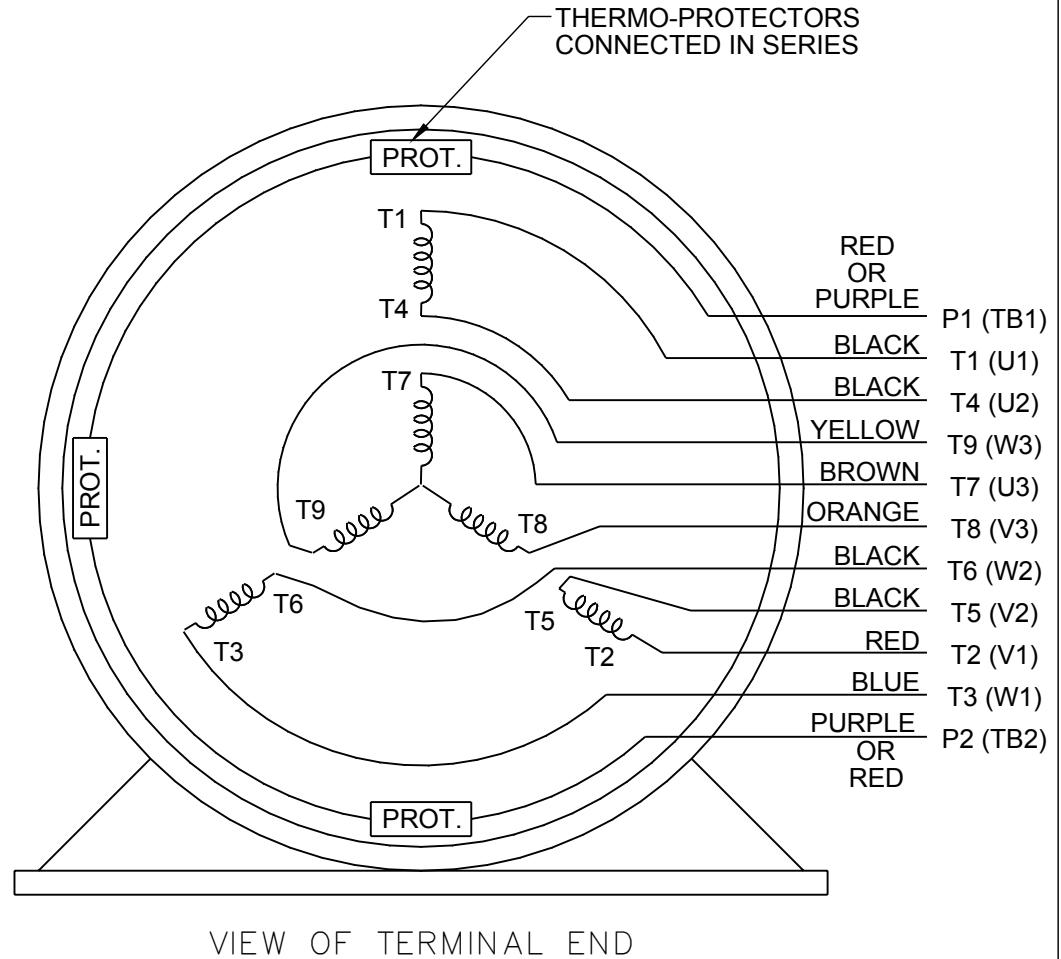


**NOTE FOR FACTORY USE ONLY:
TO SURGE TEST FOR COMMON CONNECT:**
HIGH VOLT: CONNECT P1 TO T1
THEN P2 TO L1
LOW VOLT: CONNECT P1 TO T1 & T7,
THEN P2 TO L1

LOW VOLTAGE



THREE PHASE DUAL VOLTAGE MOTOR



NOTE: LEAD'S COLOR CAN BE YELLOW OR WHITE FOR MT2 PLANT

DRAWING REVISION R	REVISION BY AJW	DATE 07-17-2015		DRAWN BY SMC	Regal Beloit America, Inc.	
ECO ECO-0081632	APPROVED BY T. VUE	DATE 07-17-2015		DATE 05-13-1992		
ECO DESCRIPTION REV'D IEC NOTATIONS PER IEC 60034-8				APPROVED BY TB	DESCRIPTION CONN DIAGRAM-INTERNAL 3 PHASE - DUAL VOLTAGE MOTOR	
COPYRIGHT REGAL BELOIT AMERICA, INC. ALL RIGHTS RESERVED. PROPRIETARY AND CONFIDENTIAL INFORMATION - THIS DOCUMENT IS THE PROPERTY OF REGAL BELOIT AMERICA, INC. ("OWNER") AND CONTAINS OWNER'S PROPRIETARY INFORMATION. ANY PERSON, CORPORATION OR OTHER FIRM RECEIVING IT IS DEEMED, BY RECEIVING IT, TO AGREE THAT IT, AND/OR ANY PART OF IT, SHALL NOT BE DISCLOSED TO ANY PERSON, CORPORATION OR OTHER ENTITY, DUPLICATED, AND/OR USED, EXCEPT AS EXPRESSLY APPROVED IN WRITING IN ADVANCE BY OWNER. THIS DOCUMENT SHALL BE RETURNED TO OWNER UPON REQUEST. IT MAY BE SUBJECT TO CERTAIN RESTRICTIONS UNDER APPLICABLE EXPORT CONTROL LAWS AND REGULATIONS.				DATE 05-13-1992	MATERIAL EE7308/EE7300	PROCESS/FINISH
			THIRD ANGLE PROJECTION	SIZE A	DRAWING NUMBER EE7308T	SHEET 1 OF 1

NONE	NONE		
NONE FT-LB	NONE V	NONE Hz	

DATE: 06/21/2017 10:38:09 AM
FORM 3531 REV.3 02/07/99
** Subject to change without notice.

Data Sheet

Date: 16-06-2017
 Customer: _____
 Attention: _____
 Submitted by: FAREEDA DUDEKULA



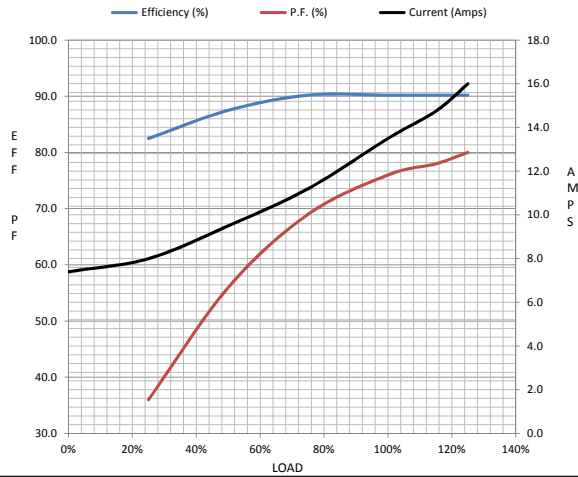
215THTL7726

Submittal

Data @ 460 V

Motor Load Data								
Load	0%	25%	50%	75%	100%	115%	125%	LR
Current (Amps)	7.4	8.0	9.5	11.2	13.5	14.8	16.0	125
Torque (ft-lb)	0.00	7.5	14.7	22.2	29.6	33.4	37.2	110
RPM	1800	1792	1786	1780	1774	1,771	1766	0
Efficiency (%)		82.5	87.5	90.2	90.2	90.2	90.2	
P.F. (%)	7.0	36.0	56.0	69.0	76.0	78.0	80.0	43.0

Motor Speed Data						Information Block	
	LR	Pull-Up	BD	Rated	Idle		
Speed (RPM)	0	900	1600	1774	1800	HP	10.0
Current (Amps)	125	105	70.0	13.5	7.4	Sync. RPM	1800
Torque (ft-lb)	110	100	125	29.6	0.00	Frame	215
						Enclosure	TENV



Construction	TTL			
Voltage	230/460 V			
Frequency	60 Hz			
Design	A			
LR Code letter	M			
Service Factor	1.0			
Temp Rise @ FL	90 ° C			
Duty	CONT			
Ambient	40 ° C			
Elevation	1,000 feet			
Rotor/Shaft wk ²	1.30 Lb-Ft ²			
Ref Wdg	K2154304 NONE			
Sound Pressure @ 1M	62 dBA			
VFD Rating	CONSTANT 1000:1			
Outline Dwg	B-SS330105-1275			
Conn. Diag	A-EE7308T			
Additional Specifications:				
0				
365THFS8036				
EQUIV CKT (OHMS / PHASE)				
R1	R2	X1	X2	Xm
0.2840	0.2840	1.4200	2.2720	34.9320

